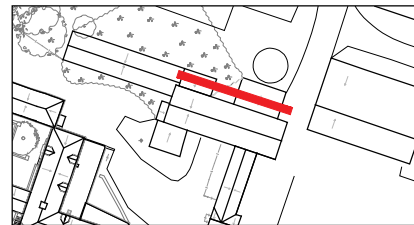
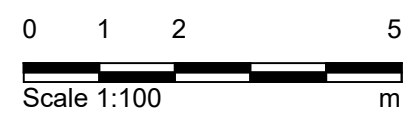


1 North Elevation
5200 1:100



© Crown copyright and database rights 2026 OS 100023251
You are not permitted to copy, sub-license, distribute or sell any of this data to third parties in any form.

© Copyright BWB Consulting Ltd



- Notes**
- All dimensions in metres unless noted otherwise. All levels in metres unless noted otherwise.
 - Based upon Greenhatch Group Survey, August 2021, supplied by Cuvette.
 - To be read in conjunction with:
 - Document series 2.14 (Listed Building drawings)
 - Document 2.16B (Central Hub Proposed Site Plan)
 - Document 2.17B (Central Hub Demolition Plan)
 - Document 5.5B (Central Hub Design Approach Document)
 - Other Design Team's Information, including (but not limited to) Architect for Wider Scheme, Structural Engineer, Building Surveyor, Landscape Architect & Planning Consultant.
 - All other surveys and site information, as they become available.

- Fabric Removal North Elevation Notes:**
- Reduce unoriginal structures/ ground levels to facilitate level access around structure.
 - Dismantle top 1m of wall and rebuild to provide bearing for roof.

- Key:**
- Existing
 - Demolition
 - Dismantled/ Repaired/ Reinstated

CONTENT OF DRAWING IS BY DONALD INSALL ASSOCIATES

Notes

- Any dwg format drawing is to be read in conjunction with and at the scale of the accompanying pdf.
- Where colours other than black or grey are used, the drawing must be plotted in colour.
- For status 'C' (Construction) drawings all dimensions are to be checked on site by the contractor, scaling is for Local Authority purposes only. Unless otherwise indicated, all dimensions are in millimeters.
- All information on this drawing is to be read in conjunction with the relevant Donald Insall Associates specification and trade contractors' drawings and information by specialists.
- In the event of any discrepancy, please contact us immediately.
- This drawing may contain survey information by others and is to be used solely for the purposes for which it was issued.
- These are uncontrolled documents issued for information purposes only. If you have any queries regarding the drawings, please contact DIA immediately.
- Please note DIA cannot be held responsible for any errors arising from changes made to an uncontrolled dwg file.

© 2025 DONALD INSALL ASSOCIATES LTD

Rev	Date	Details of issue / revision	Drw	Ch'd	Apr
P.01	16.05.25	Issued for consent	SXI	CXB	CXB

Issues & Revisions

THE OXFORDSHIRE STRATEGIC RAIL FREIGHT INTERCHANGE AND HIGHWAYS ORDER 2026

CENTRAL HUB - FABRIC REMOVAL - NORTH ELEVATION

Regulation:	5(2) (m)	Document:	2.14U
Drawn:	SXI	Checked:	CXB
Approved:	CXB	Date:	16.05.25
BWB Ref:	NTH2479	Scale@A3:	1:100

Project - Originator - Functional Breakdown - Spatial Breakdown - Form - Discipline - Number	
OxSRFI-DIA-ZZ-ZZ-DR-A-05200	
Drawing Status	Rev
S5 - SUITABLE FOR PLANNING	P01